



ZIPs: 92392 (Victorville, CA), 92394 (Victorville, CA), et. al.

Summary	2000	2007	2012
Population	75,810	116,728	150,281
Households	24,999	35,993	46,028
Families	19,141	27,931	35,797
Average Household Size	3.00	3.14	3.18
Owner Occupied HUs	16,850	25,018	32,120
Renter Occupied HUs	8,149	10,975	13,908
Median Age	31.9	32.8	32.5

Trends: 2007-2012 Annual Rate	Area	National
Population	5.18%	1.30%
Households	5.04%	1.33%
Families	5.09%	1.08%
Owner HHs	5.12%	1.41%
Median Household Income	3.19%	3.32%

Households by Income	2000		2007		2012	
	Number	Percent	Number	Percent	Number	Percent
< \$15,000	4,642	18.5%	4,726	13.1%	5,096	11.1%
\$15,000 - \$24,999	3,601	14.4%	4,595	12.8%	4,914	10.7%
\$25,000 - \$34,999	3,310	13.2%	3,626	10.1%	4,369	9.5%
\$35,000 - \$49,999	4,224	16.8%	5,652	15.7%	6,107	13.3%
\$50,000 - \$74,999	5,408	21.6%	7,162	19.9%	9,008	19.6%
\$75,000 - \$99,999	2,241	8.9%	5,425	15.1%	6,704	14.6%
\$100,000 - \$149,999	1,231	4.9%	3,427	9.5%	7,106	15.4%
\$150,000 - \$199,000	262	1.0%	862	2.4%	1,543	3.4%
\$200,000+	174	0.7%	518	1.4%	1,181	2.6%
Median Household Income	\$37,918		\$48,144		\$56,325	
Average Household Income	\$45,945		\$58,724		\$69,202	
Per Capita Income	\$15,482		\$18,757		\$21,766	

Population by Age	2000		2007		2012	
	Number	Percent	Number	Percent	Number	Percent
0 - 4	6,236	8.2%	9,735	8.3%	12,981	8.6%
5 - 9	7,644	10.1%	8,122	7.0%	11,000	7.3%
10 - 14	7,518	9.9%	10,153	8.7%	11,148	7.4%
15 - 19	5,983	7.9%	10,330	8.8%	11,798	7.9%
20 - 24	4,117	5.4%	8,761	7.5%	11,726	7.8%
25 - 34	9,536	12.6%	14,319	12.3%	21,039	14.0%
35 - 44	11,823	15.6%	15,919	13.6%	17,518	11.7%
45 - 54	8,453	11.2%	15,631	13.4%	20,013	13.3%
55 - 64	5,627	7.4%	10,836	9.3%	16,719	11.1%
65 - 74	4,948	6.5%	6,785	5.8%	8,814	5.9%
75 - 84	3,227	4.3%	4,720	4.0%	5,364	3.6%
85+	697	0.9%	1,417	1.2%	2,161	1.4%

Race and Ethnicity	2000		2007		2012	
	Number	Percent	Number	Percent	Number	Percent
White Alone	48,264	63.7%	67,720	58.0%	82,160	54.7%
Black Alone	8,177	10.8%	13,127	11.2%	16,434	10.9%
American Indian Alone	828	1.1%	1,226	1.1%	1,510	1.0%
Asian Alone	2,589	3.4%	4,791	4.1%	6,628	4.4%
Pacific Islander Alone	150	0.2%	345	0.3%	455	0.3%
Some Other Race Alone	11,406	15.0%	21,302	18.2%	31,091	20.7%
Two or More Races	4,394	5.8%	8,217	7.0%	12,003	8.0%
Hispanic Origin (Any Race)	23,569	31.1%	44,036	37.7%	64,161	42.7%

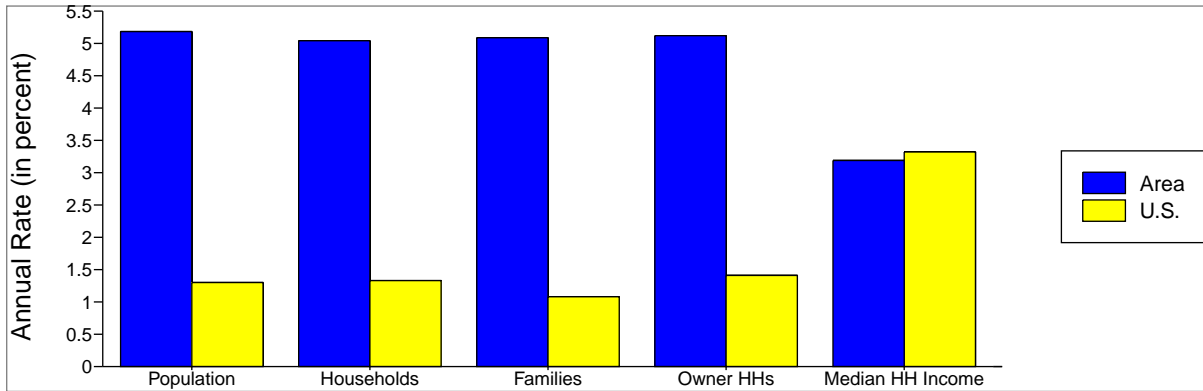
Data Note: Income is expressed in current dollars.

Source: U.S. Bureau of the Census, 2000 Census of Population and Housing. ESRI forecasts for 2007 and 2012.

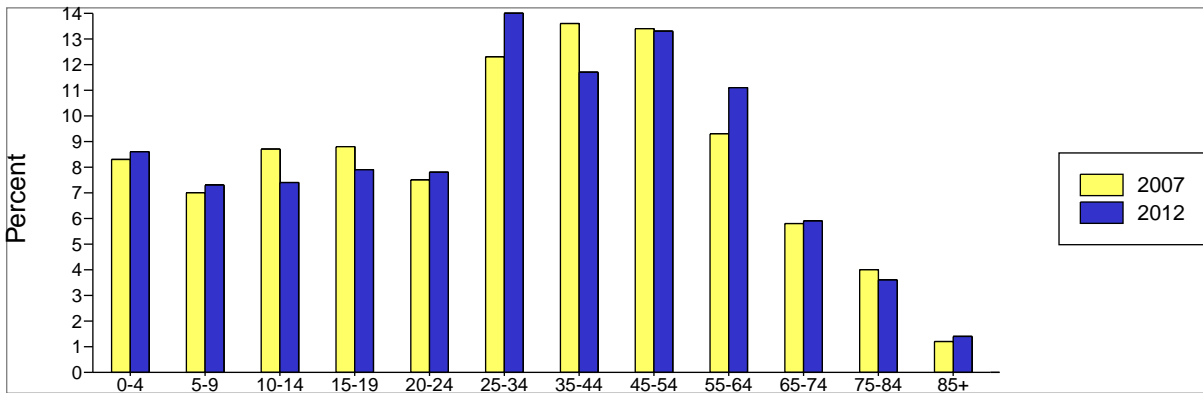


ZIPs: 92392 (Victorville, CA), 92394 (Victorville, CA), et. al.

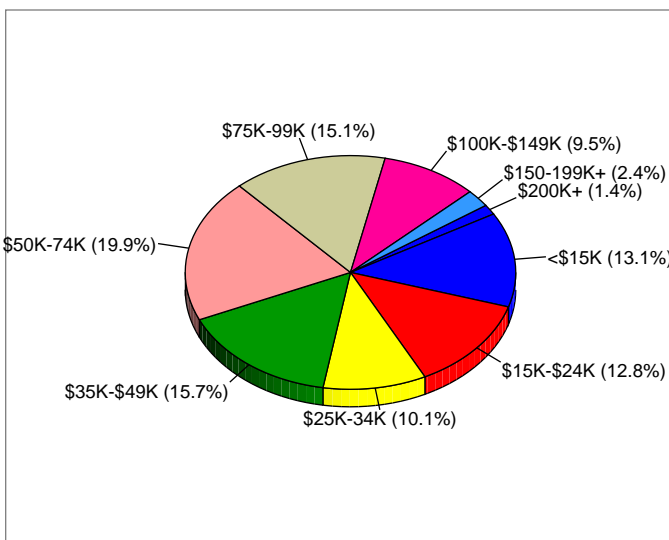
Trends 2007-2012



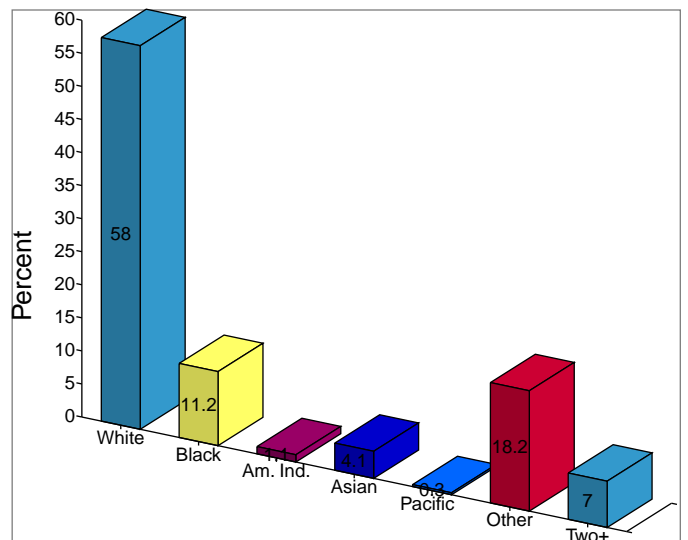
Population by Age



2007 Household Income



2007 Population by Race



2007 Percent Hispanic Origin: 37.7%