



City of Victorville

5 - Acre Industrial Opportunity Build to Suit, Sale or Lease

Foxborough Industrial Park is comprised of 233 acres and is located in the Bear Valley Road Redevelopment Project Area. The park offers tenants easy freeway access 2 miles from Interstate - 15 and within 30 miles of Interstate - 10, Interstate - 40, Highway 395 and State Route 18.

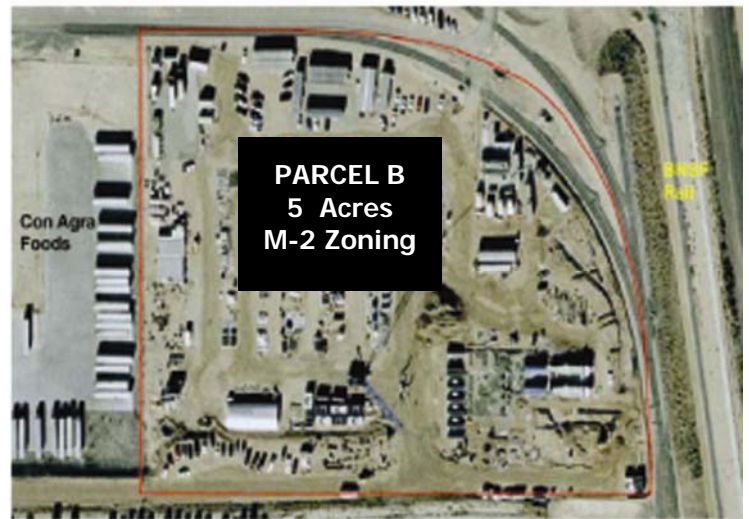
Foxborough is home to many world-class organizations including Goodyear Tire & Rubber, M&M/Mars, ConAgra Foods and Nutro Products.

.Site Features:

- 5 Acre (net) Site
- Available for sale or lease
- Fully Entitled Business Park ready for design review submittal
- Fully improved finished lot with all utilities to the site.
- Zoning: M-2 (Heavy Industrial)
- Neighboring Businesses Include: Nutro Products, ConAgra Foods, M&M Mars, Goodyear Tire & Rubber Company and others



Foxborough Industrial Park's 5 - Acre Development Site



Aerial Shot of Parcel B at Foxborough Industrial Park

For more information please contact:

City of Victorville
Collette Hanna
(800) 780-1050
opportunities@victorvillecity.com
www.Victorvillecity.com



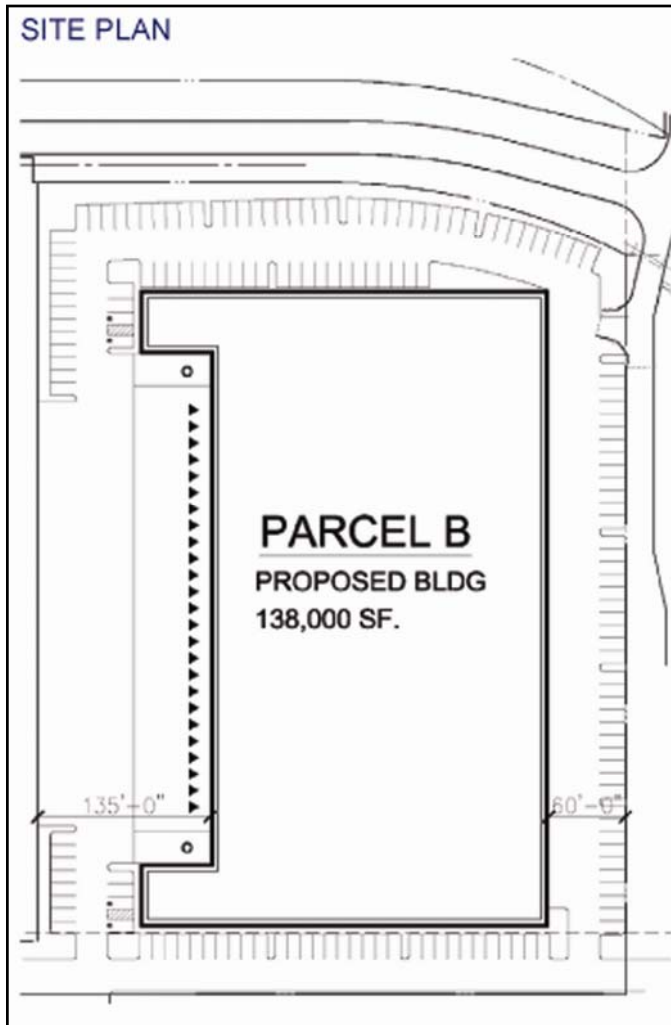
**Awards in Excellence
Grand Prize**



VICTORVILLE
California

City of Victorville

5 - Acre Industrial Opportunity Build to Suit, Sale or Lease



Foxborough Industrial Park is conveniently located just 3 miles off of Interstate-15. This site provides an ideal location for logistics-driven companies. The City of Victorville's pro-growth philosophy strives to provide businesses a completed package including customized incentive packages to meet their demands.

Incentives Include:

- Located in the Bear Valley Redevelopment Project Area
- Within the Mojave Desert AQMD, less restrictive than South Coast Region
- Fast-track Permitting
- Workforce Recruitment Services

For more information please contact:

City of Victorville

Collette Hanna

(800) 780-1050

opportunities@victorvillecity.com

www.Victorvillecity.com

A World of Opportunity